

# GEOSCIENCES SURVEY AND SERVICE

**HEAD OFFICE**

Cukang kawung 11, Bandung,  
West Java. Indonesia. 40191

**Phone /WA**

+6222 - 917-52-351 /  
+62852-9414-9948

**EMAIL**

admin@prihaditama.com

**WEBSITE**

www.prihaditama.com





We are **for beneath** the earth

# Company Overview

PT. Prihaditama is a services company that applies geosciences to answer challenges in the fields of exploration, industry, and research with universities. Founded in Bandung in 2009, this company has started to take part and has been trusted by service providers in this field to this day.

Innovative thoughts combined with experienced experts working in a team Innovative thinking combined with experienced experts who work in teams capable of delivering results wrapped in easy-to-understand language and informative visualizations will be very much in line with the expectations. The achievement of results that benefit both parties makes this company not stop trying to always improve itself and provide the best results for clients.

Involving personnel consisting of experts in the fields of geophysics, oceanography, geodesy, geology, petroleum, and mining in the field of exploration is strengthened and supported by geophysical instrument operators who are very experienced in providing actual and reliable field measurement data.

**2009**

Founded and established since 2009, PT. Prihaditama always give it best to this day.

**30**

Involving with a total of 30 experts in six aspect of diciplines.

**124**

accomplished projects across Indonesia & Phillippines during 13 years of our operation.

**71**

Total number of clients who put their trust in us and completely satisfy with our services.

# Services

## Geoelectrical survey (Geophysics)

### Application for:

Ground water investigation  
Soil/geotechnical investigation  
Mineral exploration

### Instrument:

ARES I  
ARES II

### Software

Geotomo res2dinv

## Geomagnetic Survey

### Application for:

Mining Exploration  
Geothermal Exploration

### Instrument:

Magnetometer GSM-19T

### Software

Geosoft Oasis Montaj

## Ground Penetrating Radar (GPR)

### Application for:

Underground Utilities Inspections  
Concrete Inspections  
Soil Investigation

### Instrument:

MALA Easy Locator CORE 450 MHZ

## Gravity Survey

### Application for:

Oil and Gas Exploration  
Geothermal Exploration

### Instrument:

Lacoste and Romberg Gravity Meter  
Type G

### Software

Geosoft Oasis Montaj

## GPS RTK Survey

### Application for:

Accurate Positioning

### Instrument:

GNSS Hi-Target V500  
GPS RTK Trimble 5800

## Topographic Survey

### Application for:

Mining Exploration  
Geothermal Exploration

### Instrument:

GTS-230N series

## Bathymetry Survey (Hydro-Oceanography)

### Application for:

Seabed depth measurement

### Instrument:

ODOM HYDROTAC II

## Geotechnical Survey Drilling

### Application for:

Ground water exploration  
Mining exploration  
Soil/geotechnical investigation

### Instrument:

Jacro 150

## Seismic Downhole

### Application for:

Soil/geotechnical investigation

### Instrument:

Pasi GEA3

### Software

Geostru Downhole

## Pipe Locator

### Application for :

Underground Mapping

### Instrument:

Radio Detection 8200

# Services

## Geosciences Desktop Study

- Geophysical, Geological, Oceanographic, and Geodetic Data Processing
- Geophysical, Geological, and Oceanographic Data Modeling
- Geophysical, Geological, and Oceanographic Data Interpretation & Reporting

## Other Services

- Geological Mapping
- Development of GIS Database
- Oil & Gas Prospecting
- Mineral & Coal Prospecting
- Geothermal Prospecting
- Course & Training of various method of Geology, Geophysics, Oceanography, Geodesy, Petroleum

## Instruments Rental

- Geophysical instruments
- Oceanographic instruments
- Geodetic instruments



# Project Experiences

2024

- Project Underground Pipe Mapping at Cilacap, PU Cilacap
- Project Topography Survey at Pertamina Plaju, PT. Reka Elang Inovasi
- Project Geoelectric Survey in Blitar, Abipraya - Naviri JO
- Depth of Cover Survey (DOC), Topographic Survey, and Topometric Survey, Lapi ITB - Exxon Mobile Cepu Limited
- Survey Geoelectric Survey 2D Method for Detecting Ground Water in Lahat District, South Sumatera, PT. Mustika Indah Permai
- Survey Topography at Tirta Gede Complex, Depok, West Java, PT. Tritama Sarana Jaya
- Metocean Study in Benoa, Bali, PT. Makara Jaya Marine
- Project Soil Investigation and Seismic Downhole for Site Specific Response Analysis (SSRA) in Hexagon Island, Panggang Island, Thousand Island - DKI Jakarta, PT. Jakarta Konsultindo
- Bathymetry Survey KIT - KITE in Papua, PT. Reka Elang Inovasi
- Project Ground Penetrating Radar Survey at Satrio Tower Mega Kuningan Building, Jakarta, Satrio Tower

# Project Experiences

2023

- Project Ground Penetrating Radar Survey in Palembang, Bank Indonesia
- Project Groundmagnetic Survey in Cianjur, Koperasi Produsen Pansela Jaya Indonesia
- Project Geotechnical Survey in TBBM Cikampek - TBBM Plumpang (SPK 20 PERTAGAS), PT. Solusi Energy Nusantara
- East Indonesia Bathymetry Data Digitation, PT. Reka Elang Inovasi
- Depth of Cover Survey (DOC) & WCP Data Collection, Lapi ITB Exxon Mobil Cepu Limited
- Project Geoelectric Survey in Saguling, LPPM ITB for Indonesia Power
- Project Ground Penetrating Radar Survey in Saguling, LPPM ITB
- Project Groundmagnetic Survey in Polewali Mandar, PT. Vanguard Energy Group
- Project Sub-Bottom Profile & Side Scan Sonar in Rokan - Riau, PT. Taksaka Marina Nusantara
- Project Ground Penetrating Radar Survey in Bogor, PT. Galen Sagara Perkasa
- Project AMT, ERT PLTA in Morowali, PT. Sinergi Raya Utama
- Project ERT Survey for Matenggeng Dam in Cilacap, PT. Intimulya Kencana
- Project Geoelectric Survey 2D in Kalimantan, CV. Geodril Semesta
- Project Ground Penetrating Radar Survey in Surabaya, CV. Anugerah For PLNE
- Project Bathymetry Survey in Bangka Belitung, PT. Tesla Daya ElektriKa
- Project Geomagnet Survey in Katingan - Kalimantan, PT. Yakin Citra Mandiri
- Project Mapping Survey in Pandeglang - Banten, PT. Tura Consulting Indonesia
- Topography Survey in FEED SPBG Pramuka, PT. Reka Elang Inovasi for PT. Pertamina
- ERT Survey for Matenggeng Dam, Cilacap, PT. Intimulya Multikencana
- Geomagnet Survey at Katingan, PT. Yakin Citra Mandiri

# Project Experiences

2023

- Topography Survey for Mira Pesantren, Tura Consuting for Pesantren Mira
- GPR and ERT Consultation in Cepu Area, Exxon Mobil Cepu Limited
- Bathymetry Survey, PT. Tesla Daya ElektriKa For PLN
- Remote Data Processing for Side Scan Sonar Projects, PT. Sonarfix for Rigmar
- Remote Data Processing for SBP Projects, PT. Sonarfix for Guardian Geomatics
- Survey Geoelectric 1D VES in Tangerang, PT. Purna Jaya Engineering
- Metocean Study in Cilacap, Lapi ITB for PT. Pertamina International Shipping

2022

- Geomagnetic Survey for Mining Exploration, PT Celebes Bone Mineral
- Ground Penetrating Radar Survey, Bandung Duct Line Investigation, PT Lintas Satu Visi
- Ground Penetrating Radar, Subsurface Building Structure Investigation for RSUD Tangerang, RSUD Tangerang
- Sub-Bottom Profiling Survey Tanjung Carat South Sumatra, PT Atria Teknika Konsulindo
- Bathymetry and Topometry, Tanah Kuning, PT Indokoei Internasional
- Ground Penetrating Radar Survey for Pipeline Development Lomanis - Reluwu at Districts Cilacap, PT Nindya Karya (Persero)
- Ground Penetrating Radar Survey at GI Kedinding, Surabaya. PLNE
- Ground Penetrating Radar Survey at EKA Hospital BSD, PT. PELITA RELIANCE INTERNASIONAL HOSPITAL
- Sub-Bottom Profiling Survey and Side Scan Sonar at Duriangkang DAM Reservoir , Batam. PT. GEOMARINDEX
- Electrical Resistivity Tomography (ERT) and Bathymetry Survey for Flood and Landslide Investigation, North Kalimantan, LAPI-ITB for PT Mitra Bara Jaya
- Geomagnetic Survey, Magnetic Investigation Pad Design at Airport Districts Morowali, Central Sulawesi. PT IMIP
- Soil Investigation using Seismic Down Hole Method at Cilegon, Banten. PT. Soilens for Lotte
- Ground Penetrating Radar Survey for Subsurface Utilities Investigation at Taman Mini Indonesia Indah. Kementerian PUPR



# Project Experiences

2021

- Geomagnetic Survey for Mining Exploration, PT Sumber Mitra Jaya
- GPR Survey for Dinkel Block Archaeological Site in Juntinyuat, Indramayu Balai Arkeologi Jawa Barat
- Geoelectric and Geomagnet Survey in Bajuin, Tanah Laut, South Kalimantan, PT Tribhakti Inspektama
- SBP Survey in Manyar Port Gresik, Port of PT Berlian Manyar Sejahtera PT Atrya Swascipta Rekayasa
- GPR Survey for Underground Utilities at PT. PERTAMINA RU V Balikpapan LAPI ITB for PERTAMINA Project
- Geomagnetic Survey for Gold Exploration at Bone Bolango, Gorontalo PT Celebes Bone Mineral
- GPR Survey Mapping PERTAGAS Pipeline at Ancol Jakarta for PT Solusi Energi Nusantara
- Peer Review Geology, Geochemical, Geophysics Gwa Gn Endut & Gn Ceremai, PT AILIMA-ESDM

2020

- Detailed Engineering Design (DED) at Blotongan Campus Universitas Kristen Satya Wacana Salatiga
- Supervisor for Repairing Theology Faculty building at Blontongan Campus Universitas Kristen Satya Wacana Salatiga

2019

- Supervisor for Repairing Theology Faculty building at Blontongan Campus, Universitas Kristen Satya Wacana Salatiga
- Supervisor for Cut & Fill Project at Blontongan Campus Universitas Kristen Satya Wacana Salatiga
- Geotechnical investigation at Blotongan Campus Universitas Kristen Satya Wacana salatiga
- Ground Penetrating Radar & Resistivity 2D Research on Theology building and Faculty Technology Information Building, and the creation of a master plan at Blotongan Campus Universitas Kristen Satya Wacana Salatiga

# Project Experiences

2018

- Provision of Gravity/Geophysics Survey in Hamiding Mountain, PT Star Energy
- Provision of Ultrasonic and Ground Penetrating Radar Testing Services PT. Supreme Energy
- Sub Bottom Profiler (SBP) and Ground Penetrating Radar (GPR) Survey, Tambak Lorok, Semarang, PT. Hutama Karya
- Geological and Geophysical Research in Goa Kidang, Blora Karst Area, Balai Arkeologi Yogyakarta
- Soil Resistivity Indutry MNA-Serang, PT. Multi Nabati Asahan, WILMAR

2017

- GPR Survey of the light Railroad Project LRT kuningan Dukuh Atas section, PT Adhi Karya Divisi Konstruksi Sipil & Trackworks LRT
- Citarum Block Joint Study Program, PT. GWN
- Geoelectric and Geomagnetic Survey for Investigation of Subsidence Well in Manggis Village, Puncu District, Kediri Regency, East Java, ESDM Jawa Timur
- Stockopname Services for Fly Ash and Bottom Ash (Geoelectrical Survey) at PLTU Asam-asam, South Kalimantan. PT. Surveyor Indonesia - PT PLN
- Ground Penetrating Radar Survey UGC 150 kV Bumicokro-Pandaan Baru at Pandaan East Java. PT. Prima Layanan Nasional Enjiniring (PLN-E)

2016

- Ground Penetrating Radar in Tanjung Priok Substations. FT UI - PLN Pusenlis
- Geological Mapping and Investigation of Enviromental Planning and Disaster Mitigation for Development of Bulungan District Locus at Tanjung Palas, Development Plan. Tanjung Palas Government
- Organizer for Training "Gravity & Magnetic Modelling For Petroleum Exploration". Kangean Energy Indonesia
- Organizer for Training "Understanding Geomechanics In Related To Exploration And Production In Petroleum Industry". SKKMIGAS
- Organizer for Training "Advance Reservoir Engineering". SKKMIGAS
- Petrography, Mineralogy & SEM Analysis, Bandung. PT J Resources Bolaang Mongondow

2015

- Hydro-Oceanography Engineering Study for Feasibility Construction Submarine Cable of 20 kV Sorong City – Doom Island, West Papua. PLN Pusenlis.
- Resistivity IP Survey, Ciemas - Sukabumi, West Java. PT Wilton Wahana Indonesia

# Project Experiences

2014

- Georadar at Husein Sastranegara Airport Runway Area, Bandung, Indonesia. PT Waskita
- Review and Re-Evaluate The Hydrocarbon Potential of the Malawi Basin Based on Previous Studies Conducted on Malawi Basin Project. PT Star Diamond Sanggau
- Consulting Services for Hydro Oceanography Survey and Front End Engineering Design (FEED) CBM 3500-6500 DWT Terminal and Pier 100-1500 DWT, Ternate Construction, North Maluku. PT Atria Swascripta Engineering - PT Pertamina

2013

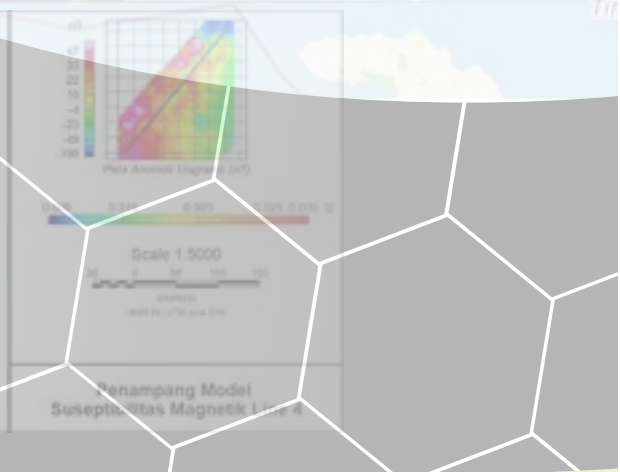
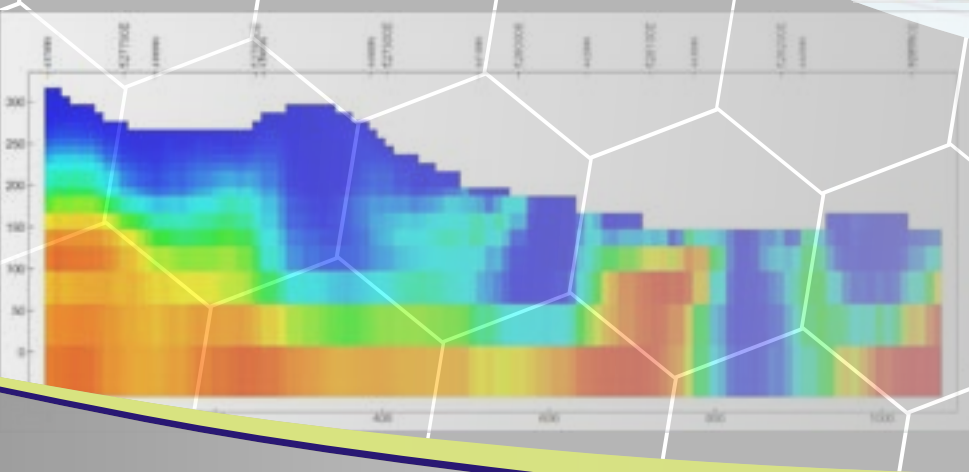
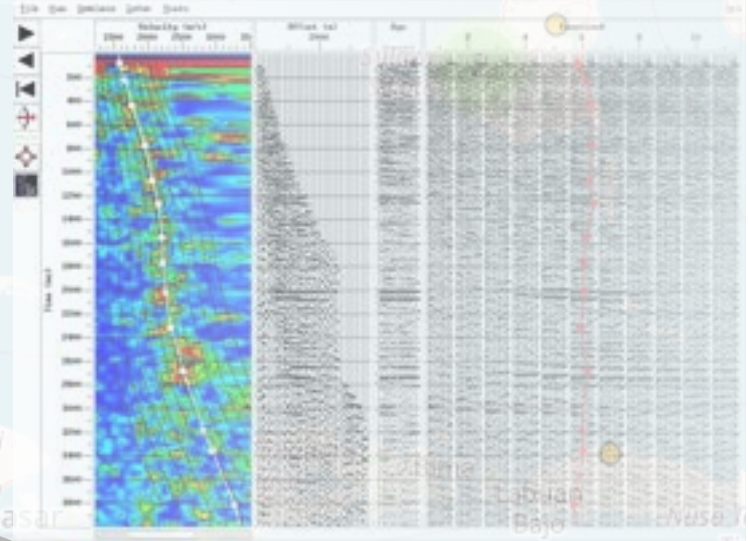
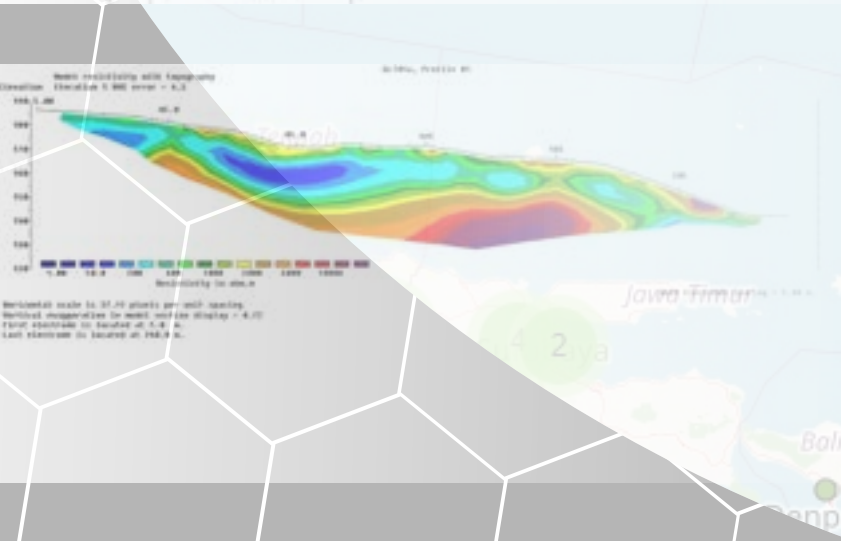
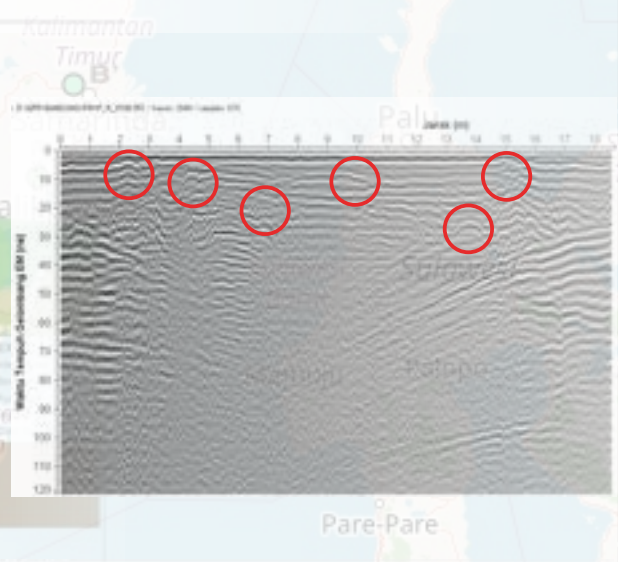
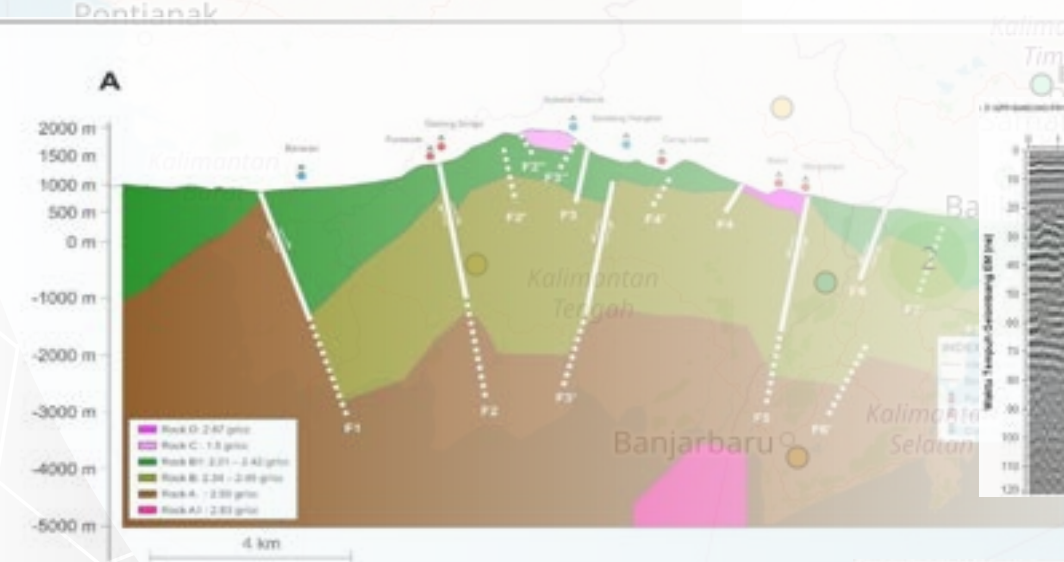
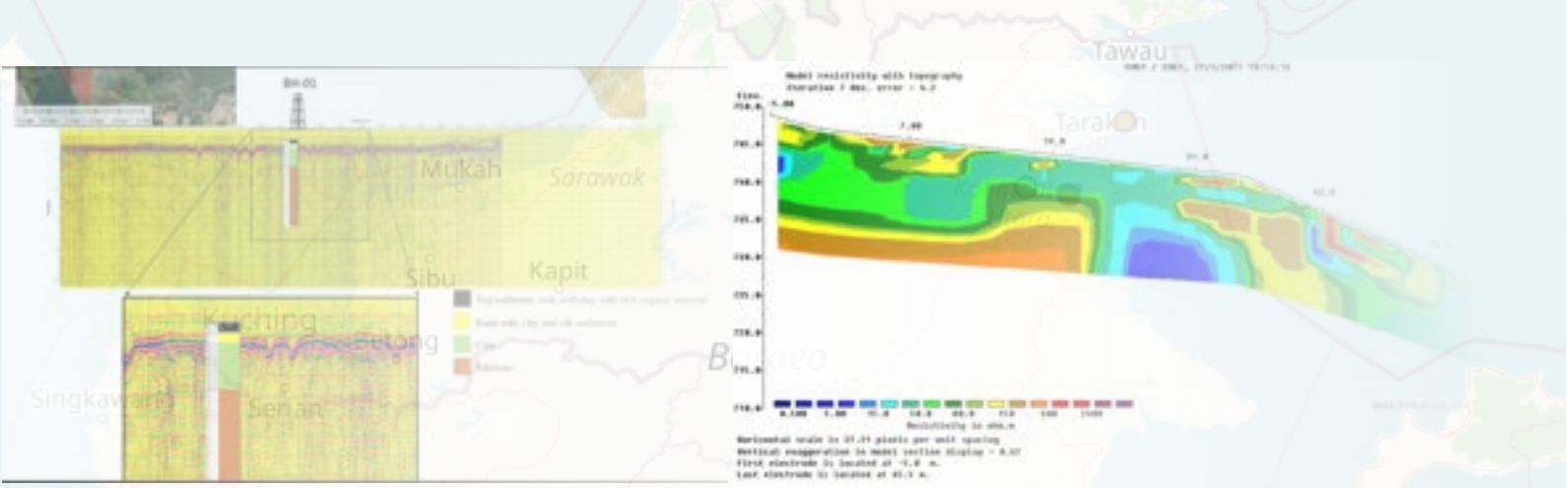
- Preliminary Survey of Geothermal Potential Wilis Mountain - East Java. PT MRI Energy
- Hydro-Oceanography Survey for Submarine Cable Interconnection from Banda Aceh - Sabang and Banda Aceh - Nasi Island. PT PLN Pusenlis
- Topography Survey for 150KV Transmission Cable Section Koto Panjang - Garuda Sakti, Section Bangkinang - Garuda Sakti, Section Duri Chart Stone, Riau. PT PLN Pusenlis
- 2D Geoelectrical Shallow Prospect Low Berai, Tanjung. PT Pertamina EP
- Geomagnetic Survey of Galunggung Lake, West Java. PT Energi Kinan Internasional
- Resistivity Soil Survey, Cepu. PT Pertamina EP
- Sub-Bottom Profiling Survey in Serang Banten. PT Permata Energy
- Hydro-Oceanography Study for Submarine Cable 20KV at Pusong Island to Kuala Langsa, Nagroe Aceh Darussalam. Faculty of Engineering Universitas Syah Kuala Aceh - PLN Pusenlis
- Georadar at Soekarno-Hatta Airport Runway Area, Tangerang, Indonesia PT Uretek Services

2012

- Investigations of Ignimbrite in PT Tanjung Belit Bara Utama coal mines at Muara Bungo District, Jambi. Survey & interpret geoelectric data.

2011

- Review and Analysis of Potential Primary Energy and Renewable Energy at Sumatra. PLN Pusenlis
- Geomagnetic Survey of Determining the Location of Exploration Wells in the Songa Wayaua Field, North Maluku. PT Jasakon Putra Utama
- 10 km Geoelectric Survey dan Passive Seismic at South East Madura Block, Sumenep Regency, East Java. PT. Energi Mineral Langgeng



We are for beneath the earth



# PT PRIHADITAMA

GEOSCIENCES & OCEANOGRAPHY CONSULTING

## Contact Details

### HEAD OFFICE

Cukang kawung 11, Bandung, West Java. Indonesia. 40191

### Phone /WA

022 - 917-52-351 / 0852-9414-9948

### EMAIL

[admin@prihaditama.com](mailto:admin@prihaditama.com)

### WEBSITE

[www.prihaditama.com](http://www.prihaditama.com)

Please visit our website for more update information regarding our projects, equipments, and services.

Do not hesitate to contact us by phone or email.

We are **f o r b e n e a t h** the earth