

GEOSCIENCES SURVEY AND SERVICE

**HEAD OFFICE**

Cukang kawung 11, Bandung,
West Java. Indonesia. 40191

Phone /WA

+6222 - 917-52-351 /
+62852-9414-9948

EMAIL

admin@prihaditama.com

WEBSITE

www.prihaditama.com





We are **for beneath** the earth

Company Overview

PT. Prihaditama is a services company that applies geosciences to answer challenges in the fields of exploration, industry, and research with universities. Founded in Bandung in 2009, this company has started to take part and has been trusted by service providers in this field to this day.

Innovative thoughts combined with experienced experts working in a team Innovative thinking combined with experienced experts who work in teams capable of delivering results wrapped in easy-to-understand language and informative visualizations will be very much in line with the expectations. The achievement of results that benefit both parties makes this company not stop trying to always improve itself and provide the best results for clients.

Involving personnel consisting of experts in the fields of geophysics, oceanography, geodesy, geology, petroleum, and mining in the field of exploration is strengthened and supported by geophysical instrument operators who are very experienced in providing actual and reliable field measurement data.

2009

Founded and established since 2009, PT. Prihaditama always give it best to this day.

30

Involving with a total of 30 experts in six aspect of diciplines.

124

accomplished projects across Indonesia & Phillippines during 13 years of our operation.

71

Total number of clients who put their trust in us and completely satisfy with our services.

Services

Geoelectrical survey (Geophysics)

Application for:

Ground water investigation
Soil/geotechnical investigation
Mineral exploration

Instrument:

ARES I
ARES II

Software

Geotomo res2dinv

Geomagnetic Survey

Application for:

Mining Exploration
Geothermal Exploration

Instrument:

Magnetometer GSM-19T

Software

Geosoft Oasis Montaj

Ground Penetrating Radar (GPR)

Application for:

Underground Utilities Inspections
Concrete Inspections
Soil Investigation

Instrument:

MALA Easy Locator CORE 450 MHZ

Gravity Survey

Application for:

Oil and Gas Exploration
Geothermal Exploration

Instrument:

Lacoste and Romberg Gravity Meter
Type G

Software

Geosoft Oasis Montaj

GPS RTK Survey

Application for:

Accurate Positioning

Instrument:

GNSS Hi-Target V500
GPS RTK Trimble 5800

Topographic Survey

Application for:

Mining Exploration
Geothermal Exploration

Instrument:

GTS-230N series

Bathymetry Survey (Hydro-Oceanography)

Application for:

Seabed depth measurement

Instrument:

ODOM HYDROTAC II

Geotechnical Survey Drilling

Application for:

Ground water exploration
Mining exploration
Soil/geotechnical investigation

Instrument:

Jacro 150

Seismic Downhole

Application for:

Soil/geotechnical investigation

Instrument:

Pasi GEA3

Software

Geostru Downhole

Pipe Locator

Application for :

Underground Mapping

Instrument:

Radio Detection 8200

Services

Geosciences Desktop Study

- Geophysical, Geological, Oceanographic, and Geodetic Data Processing
- Geophysical, Geological, and Oceanographic Data Modeling
- Geophysical, Geological, and Oceanographic Data Interpretation & Reporting

Other Services

- Geological Mapping
- Development of GIS Database
- Oil & Gas Prospecting
- Mineral & Coal Prospecting
- Geothermal Prospecting
- Course & Training of various method of Geology, Geophysics, Oceanography, Geodesy, Petroleum

Instruments Rental

- Geophysical instruments
- Oceanographic instruments
- Geodetic instruments



Project Experiences

2025

- Project Bathymetry Survey at Malili, Luwu Timur, South Sulawesi, PT Nickel Sentosa Indonesia

2024

- Project Marine Magnetic at Muara Binuangeun, Ujung Kulon, Banten, PT. Petrosol
- Project Multichannel Analysis of Surface Waves (MASW) Area PT. Amman Mineral Nusa Tenggara in Batu Hijau East Nusa Tenggara, PT. Wiratman
- Topography Mapping with Lidar in Cianjur, Peternakan Sapi Berkah
- Bathymetry and Hydrology Survey in Kelinjau and Marah River, East Kutai, East Kalimantan, PT. Ganeca Environmental Services
- Geoelectric Studies to Localize Oil-Contaminated Land, Minas - Riau, PT. Envi Reksatama Engineering

Project Experiences

2024

- Analysis of Share Acquisition Plan in Madura Strait, PT. Waviv Technologies
- Project Bathymetry and Sub Bottom Profile (SBP) in East Luwu, South Sulawesi, PT. Nikel Sentosa Indonesia
- Ground Penetrating Radar Survey at Bank Indonesia Building, Jakarta, PT. Wiratman
- Georadar Survey in Terminal 3 Soekarno-Hatta Airport, PT. Quadran Energi Rekayasa for PT. Angkasa Pura
- Topography and Photogrammetry Survey, CV. Sinergi Braga Mandiri for Caturindo Agungjaya Rubber
- Geoelectric 1D for Ground Water Exploration, CV. Sinergi Braga Mandiri for Caturindo Agungjaya Rubber
- Ultra Sonic Pulse Velocity Survey in PT. Lestari Banten Energi Port, Cilegon, Banten, PT. Graha Cipta Samudra
- Project Underground Pipe Mapping at Cilacap, PU Cilacap
- Project Topography Survey at Pertamina Plaju, PT. Reka Elang Inovasi
- Project Geoelectric Survey in Blitar, Abipraya - Naviri JO
- Depth of Cover Survey (DOC), Topographic Survey, and Topometric Survey, Lapi ITB - Exxon Mobile Cepu Limited
- Survey Geoelectric Survey 2D Method for Detecting Ground Water in Lahat District, South Sumatera, PT. Mustika Indah Permai
- Survey Topography at Tirta Gede Complex, Depok, West Java, PT. Tritama Sarana Jaya
- Metocean Study in Benoa, Bali, PT. Makara Jaya Marine
- Project Soil Investigation and Seismic Downhole for Site Spesific Response Analysis (SSRA) in Hexagon Island, Panggang Island, Thousand Island - DKI Jakarta, PT. Jakarta Konsultindo
- Bathymetry Survey KIT - KITE in Papua, PT. Reka Elang Inovasi
- Project Ground Penetrating Radar Survey at Satrio Tower Mega Kuningan Building, Jakarta, Satrio Tower

Project Experiences

2023

- Project Ground Penetrating Radar Survey in Palembang, Bank Indonesia
- Project Groundmagnetic Survey in Cianjur, Koperasi Produsen Pansela Jaya Indonesia
- Project Geotechnical Survey in TBBM Cikampek - TBBM Plumpang (SPK 20 PERTAGAS), PT. Solusi Energy Nusantara
- East Indonesia Bathymetry Data Digitation, PT. Reka Elang Inovasi
- Depth of Cover Survey (DOC) & WCP Data Collection, Lapi ITB Exxon Mobil Cepu Limited
- Project Geoelectric Survey in Saguling, LPPM ITB for Indonesia Power
- Project Ground Penetrating Radar Survey in Saguling, LPPM ITB
- Project Groundmagnetic Survey in Polewali Mandar, PT. Vanguard Energy Group
- Project Sub-Bottom Profile & Side Scan Sonar in Rokan - Riau, PT. Taksaka Marina Nusantara
- Project Ground Penetrating Radar Survey in Bogor, PT. Galen Sagara Perkasa
- Project AMT, ERT PLTA in Morowali, PT. Sinergi Raya Utama
- Project ERT Survey for Matenggeng Dam in Cilacap, PT. Intimulya Kencana
- Project Geoelectric Survey 2D in Kalimantan, CV. Geodril Semesta
- Project Ground Penetrating Radar Survey in Surabaya, CV. Anugerah For PLNE
- Project Bathymetry Survey in Bangka Belitung, PT. Tesla Daya ElektriKa
- Project Geomagnet Survey in Katingan - Kalimantan, PT. Yakin Citra Mandiri
- Project Mapping Survey in Pandeglang - Banten, PT. Tura Consulting Indonesia
- Topography Survey in FEED SPBG Pramuka, PT. Reka Elang Inovasi for PT. Pertamina
- ERT Survey for Matenggeng Dam, Cilacap, PT. Intimulya Multikencana
- Geomagnet Survey at Katingan, PT. Yakin Citra Mandiri

Project Experiences

2023

- Topography Survey for Mira Pesantren, Tura Consuting for Pesantren Mira
- GPR and ERT Consultation in Cepu Area, Exxon Mobil Cepu Limited
- Bathymetry Survey, PT. Tesla Daya ElektriKa For PLN
- Remote Data Processing for Side Scan Sonar Projects, PT. Sonarfix for Rigmar
- Remote Data Processing for SBP Projects, PT. Sonarfix for Guardian Geomatics
- Survey Geoelectric 1D VES in Tangerang, PT. Purna Jaya Engineering
- Metocean Study in Cilacap, Lapi ITB for PT. Pertamina International Shipping

2022

- Geomagnetic Survey for Mining Exploration, PT Celebes Bone Mineral
- Ground Penetrating Radar Survey, Bandung Duct Line Investigation, PT Lintas Satu Visi
- Ground Penetrating Radar, Subsurface Building Structure Investigation for RSUD Tangerang, RSUD Tangerang
- Sub-Bottom Profiling Survey Tanjung Carat South Sumatra, PT Atria Teknika Konsulindo
- Bathymetry and Topometry, Tanah Kuning, PT Indokoei Internasional
- Ground Penetrating Radar Survey for Pipeline Development Lomanis - Reluwu at Districts Cilacap, PT Nindya Karya (Persero)
- Ground Penetrating Radar Survey at GI Kedinding, Surabaya. PLNE
- Ground Penetrating Radar Survey at EKA Hospital BSD, PT. PELITA RELIANCE INTERNASIONAL HOSPITAL
- Sub-Bottom Profiling Survey and Side Scan Sonar at Duriangkang DAM Reservoir , Batam. PT. GEOMARINDEX
- Electrical Resistivity Tomography (ERT) and Bathymetry Survey for Flood and Landslide Investigation, North Kalimantan, LAPI-ITB for PT Mitra Bara Jaya
- Geomagnetic Survey, Magnetic Investigation Pad Design at Airport Districts Morowali, Central Sulawesi. PT IMIP
- Soil Investigation using Seismic Down Hole Method at Cilegon, Banten. PT. Soilens for Lotte
- Ground Penetrating Radar Survey for Subsurface Utilities Investigation at Taman Mini Indonesia Indah. Kementerian PUPR

Project Experiences

2021

- Geomagnetic Survey for Mining Exploration, PT Sumber Mitra Jaya
- GPR Survey for Dinkel Block Archaeological Site in Juntinyuat, Indramayu Balai Arkeologi Jawa Barat
- Geoelectric and Geomagnet Survey in Bajuin, Tanah Laut, South Kalimantan, PT Tribhakti Inspektama
- SBP Survey in Manyar Port Gresik, Port of PT Berlian Manyar Sejahtera PT Atrya Swascipta Rekayasa
- GPR Survey for Underground Utilities at PT. PERTAMINA RU V Balikpapan LAPI ITB for PERTAMINA Project
- Geomagnetic Survey for Gold Exploration at Bone Bolango, Gorontalo PT Celebes Bone Mineral
- GPR Survey Mapping PERTAGAS Pipeline at Ancol Jakarta for PT Solusi Energi Nusantara
- Peer Review Geology, Geochemical, Geophysics Gwa Gn Endut & Gn Ceremai, PT AILIMA-ESDM

2020

- Detailed Engineering Design (DED) at Blotongan Campus Universitas Kristen Satya Wacana Salatiga
- Supervisor for Repairing Theology Faculty building at Blontongan Campus Universitas Kristen Satya Wacana Salatiga

2019

- Supervisor for Repairing Theology Faculty building at Blontongan Campus, Universitas Kristen Satya Wacana Salatiga
- Supervisor for Cut & Fill Project at Blontongan Campus Universitas Kristen Satya Wacana Salatiga
- Geotechnical investigation at Blotongan Campus Universitas Kristen Satya Wacana salatiga
- Ground Penetrating Radar & Resistivity 2D Research on Theology building and Faculty Technology Information Building, and the creation of a master plan at Blotongan Campus Universitas Kristen Satya Wacana Salatiga

Project Experiences

2018

- Provision of Gravity/Geophysics Survey in Hamiding Mountain, PT Star Energy
- Provision of Ultrasonic and Ground Penetrating Radar Testing Services PT. Supreme Energy
- Sub Bottom Profiler (SBP) and Ground Penetrating Radar (GPR) Survey, Tambak Lorok, Semarang, PT. Hutama Karya
- Geological and Geophysical Research in Goa Kidang, Blora Karst Area, Balai Arkeologi Yogyakarta
- Soil Resistivity Indutry MNA-Serang, PT. Multi Nabati Asahan, WILMAR

2017

- GPR Survey of the light Railroad Project LRT kuningan Dukuh Atas section, PT Adhi Karya Divisi Konstruksi Sipil & Trackworks LRT
- Citarum Block Joint Study Program, PT. GWN
- Geoelectric and Geomagnetic Survey for Investigation of Subsidence Well in Manggis Village, Puncu District, Kediri Regency, East Java, ESDM Jawa Timur
- Stockopname Services for Fly Ash and Bottom Ash (Geoelectrical Survey) at PLTU Asam-asam, South Kalimantan. PT. Surveyor Indonesia - PT PLN
- Ground Penetrating Radar Survey UGC 150 kV Bumicokro-Pandaan Baru at Pandaan East Java. PT. Prima Layanan Nasional Enjiniring (PLN-E)

2016

- Ground Penetrating Radar in Tanjung Priok Substations. FT UI - PLN Pusenlis
- Geological Mapping and Investigation of Enviromental Planning and Disaster Mitigation for Development of Bulungan District Locus at Tanjung Palas, Development Plan. Tanjung Palas Government
- Organizer for Training "Gravity & Magnetic Modelling For Petroleum Exploration". Kangean Energy Indonesia
- Organizer for Training "Understanding Geomechanics In Related To Exploration And Production In Petroleum Industry". SKKMIGAS
- Organizer for Training "Advance Reservoir Engineering". SKKMIGAS
- Petrography, Mineralogy & SEM Analysis, Bandung. PT J Resources Bolaang Mongondow

2015

- Hydro-Oceanography Engineering Study for Feasibility Construction Submarine Cable of 20 kV Sorong City – Doom Island, West Papua. PLN Pusenlis.
- Resistivity IP Survey, Ciemas - Sukabumi, West Java. PT Wilton Wahana Indonesia

Project Experiences

2014

- Georadar at Husein Sastranegara Airport Runway Area, Bandung, Indonesia. PT Waskita
- Review and Re-Evaluate The Hydrocarbon Potential of the Malawi Basin Based on Previous Studies Conducted on Malawi Basin Project. PT Star Diamond Sanggau
- Consulting Services for Hydro Oceanography Survey and Front End Engineering Design (FEED) CBM 3500-6500 DWT Terminal and Pier 100-1500 DWT, Ternate Construction, North Maluku. PT Atria Swascripta Engineering - PT Pertamina

2013

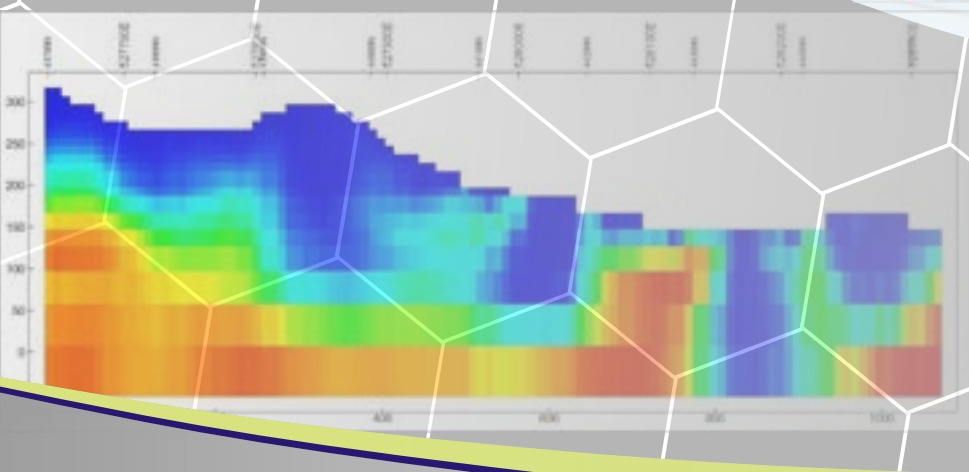
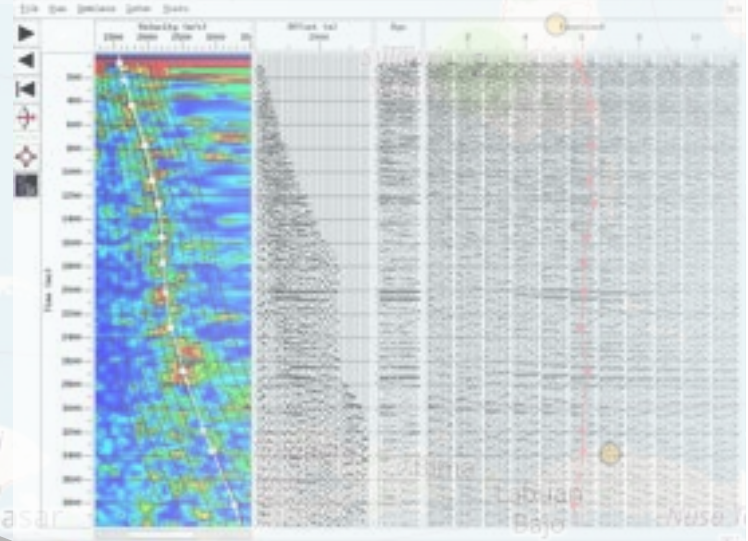
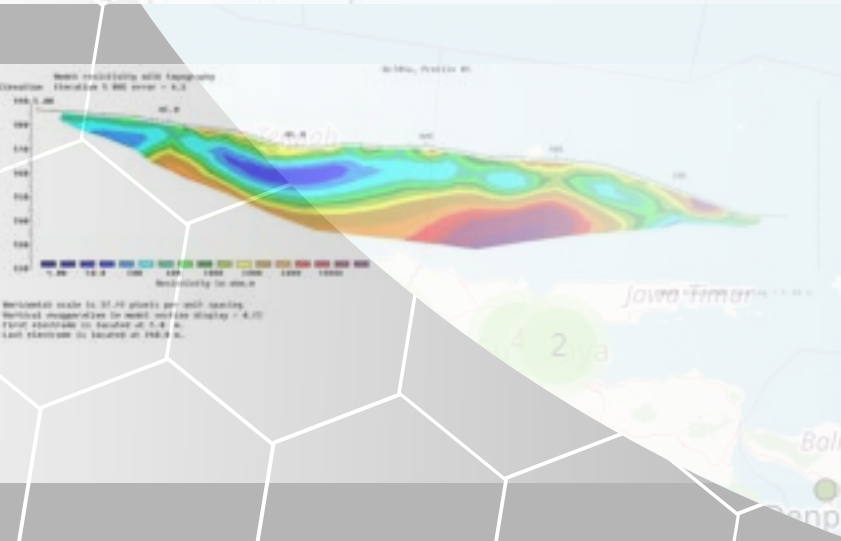
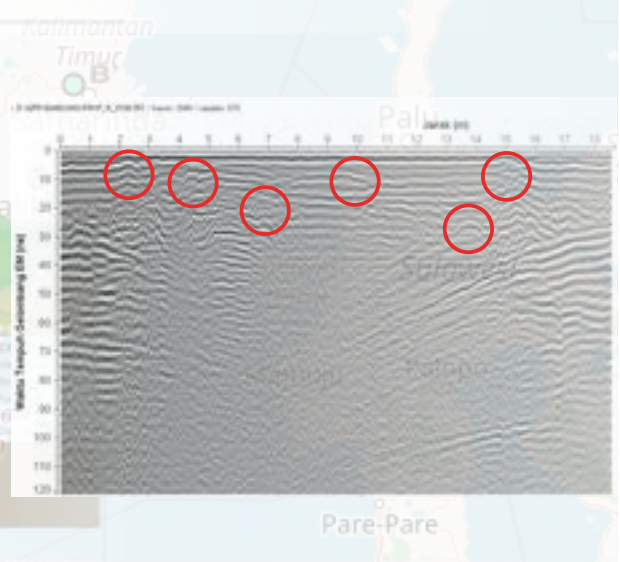
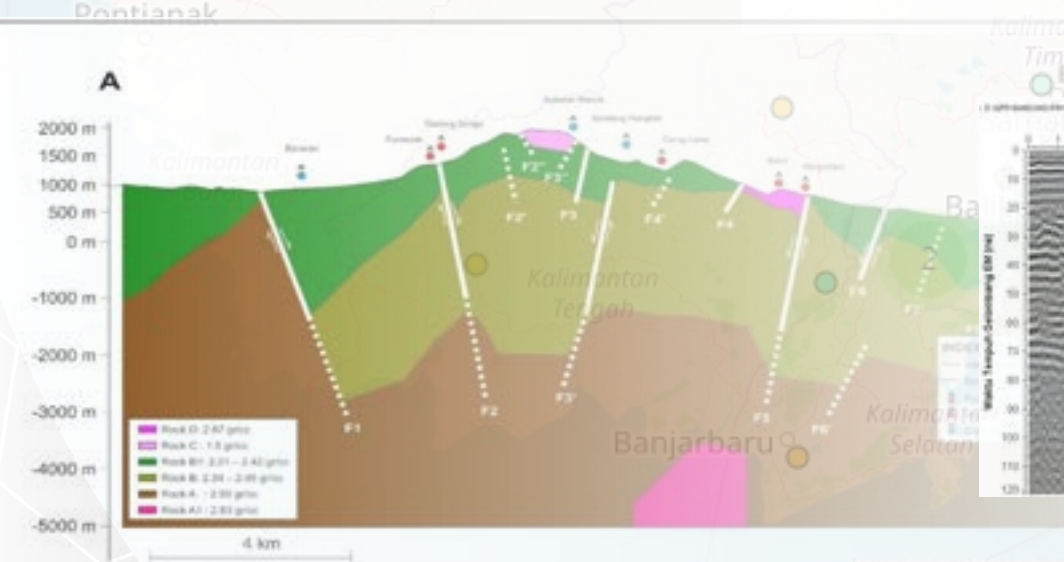
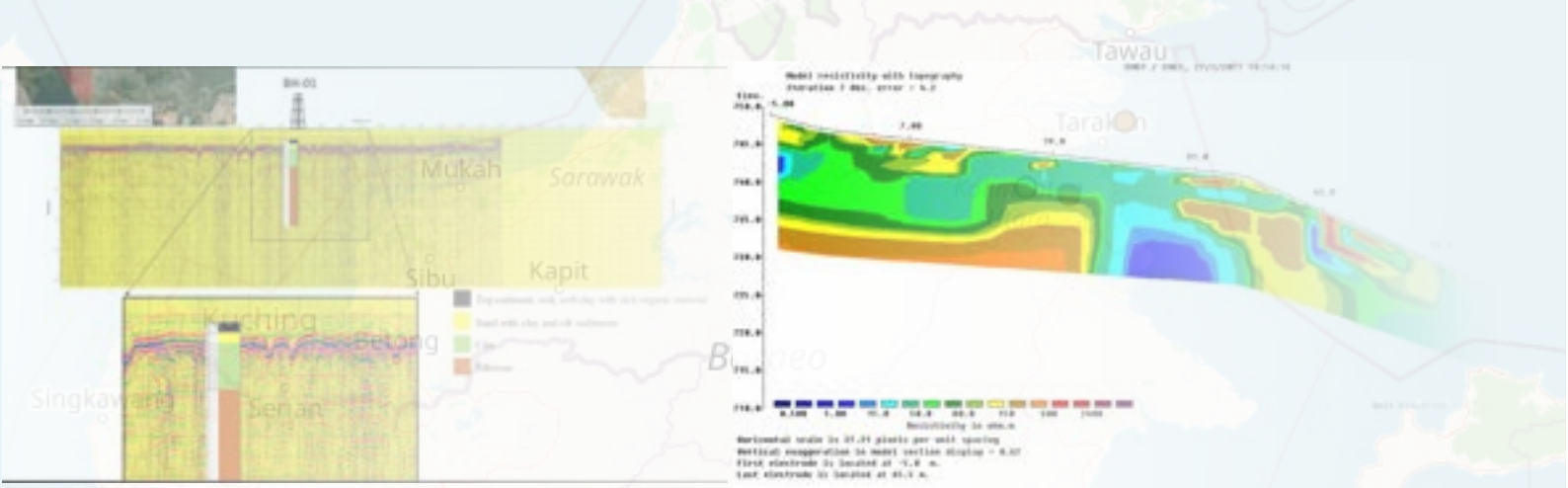
- Preliminary Survey of Geothermal Potential Wilis Mountain - East Java. PT MRI Energy
- Hydro-Oceanography Survey for Submarine Cable Interconnection from Banda Aceh - Sabang and Banda Aceh - Nasi Island. PT PLN Pusenlis
- Topography Survey for 150KV Transmission Cable Section Koto Panjang - Garuda Sakti, Section Bangkinang - Garuda Sakti, Section Duri Chart Stone, Riau. PT PLN Pusenlis
- 2D Geoelectrical Shallow Prospect Low Berai, Tanjung. PT Pertamina EP
- Geomagnetic Survey of Galunggung Lake, West Java. PT Energi Kinan Internasional
- Resistivity Soil Survey, Cepu. PT Pertamina EP
- Sub-Bottom Profiling Survey in Serang Banten. PT Permata Energy
- Hydro-Oceanography Study for Submarine Cable 20KV at Pusong Island to Kuala Langsa, Nagroe Aceh Darussalam. Faculty of Engineering Universitas Syah Kuala Aceh - PLN Pusenlis
- Georadar at Soekarno-Hatta Airport Runway Area, Tangerang, Indonesia PT Uretek Services

2012

- Investigations of Ignimbrite in PT Tanjung Belit Bara Utama coal mines at Muara Bungo District, Jambi. Survey & interpret geoelectric data.

2011

- Review and Analysis of Potential Primary Energy and Renewable Energy at Sumatra. PLN Pusenlis
- Geomagnetic Survey of Determining the Location of Exploration Wells in the Songa Wayaua Field, North Maluku. PT Jasakon Putra Utama
- 10 km Geoelectric Survey dan Passive Seismic at South East Madura Block, Sumenep Regency, East Java. PT. Energi Mineral Langgeng



We are for beneath the earth



PT PRIHADITAMA

GEOSCIENCES & OCEANOGRAPHY CONSULTING

Contact Details

HEAD OFFICE

Cukang kawung 11, Bandung, West Java. Indonesia. 40191

Phone /WA

022 - 917-52-351 / 0852-9414-9948

EMAIL

admin@prihaditama.com

WEBSITE

www.prihaditama.com

Please visit our website for more update information regarding our projects, equipments, and services.

Do not hesitate to contact us by phone or email.

We are **f o r b e n e a t h** the earth